



Welcome to Temple Beth El of Augusta, Maine

embracing a spirit of community, lifelong Jewish learning, commitment to inclusiveness, and active participation in Jewish life in Central Maine

artwork by Lenora Leibowitz

Sivan-Tammuz-Av 5779/July-August 2019

From the desk of Rabbi Asch

This past week, we read the episode of the spies scouting out the land from the book of Numbers. As the people are poised to enter the land promised to Abraham by God, twelve spies are sent out. They report that the land is indeed abundant, but the people there are huge. They then add some commentary. It will be impossible to defeat them in battle, the spies claim. “We looked like grasshoppers to ourselves, and so we much have looked to them” (Numbers 13:33). While two spies, Caleb and Joshua, argue that the people can indeed triumph with God’s help, fear rules the day. The people, God decides, are not ready to enter the land and are destined to 40 years of wandering in the wilderness until a new generation will be ready to enter.

The haftarah portion for the week comes from the book of Joshua and describes another scouting experience, this one undertaken at the city of Jericho. Two spies barely escape with their lives and are saved by Rahab. The report they bring back, however, is positive. They don’t focus on the fortifications of the city or the fact that the inhabitants are ready to fight, but report the words of Rahab that the “inhabitants of the land are quaking before us” (Joshua 2:24).

Two different episodes, 40 years apart, reveal not only that the people are ready to enter the land the second time, but also the importance of perspective. Each time, the spies see things that are positive and negative. In the first instance, the spies give in to their fear, focusing on the negative instead of what is good. In the second instance, the spies bring back a positive report, so positive, in fact, that as readers it might be hard for us to even imagine what could go wrong as the people try to enter the land. We each have a piece of both in us: sometimes we can only see the negative and sometimes we focus on what is positive.

For many of us, we are in a season of optimism. Summer! It is a time of lake swimming, strawberry picking, hiking, gardening, trips to the ocean, and time outside. What could be wrong with that? Our Temple calendar is also brimming with summer activities, from Shabbat on the Lake and hiking Shabbat to Funtensive. We just finished up a fantastic Maine Conference for Jewish Life that brought together Jews from around the state for amazing learning, soulful singing, and community. Our building project is progressing and we are looking forward to moving into our new space in the fall!

At the same time, our liturgical calendar also sounds a note of sadness with the commemoration of Tisha B’Av and the nine days of mourning leading up to that holiday. This ancient day commemorates the destruction of the First and Second Temples as well as other tragic events in Jewish history. It is only our second full day fast (the other is Yom Kippur). This year, we are seeking to make this holiday relevant for our times with a joint commemoration (see page 7 for more details). We will gather with the interfaith community for a traditional reading of the Book of Lamentations and hear stories of displacement from immigrants in our own community. After the program we will join together to break the fast. I hope in the midst of the celebration of summer you will also find time to join us for this time of mourning.

TBE Schedule: July-August

Services

Note: As of June 3rd, all services and activities will be in the Shuman Education Building

Friday, July 12

7:00pm Shabbat Service

Saturday, July 13

10:30am Shabbat Walk

Friday, July 26

6:00pm Shabbat on the Lake

7:00pm Potluck Dinner

Friday, August 9

6:00pm Shabbat on the Lake

7:00pm Potluck Dinner

Sunday, August 11

7:00pm Tisha B'Av Service

Friday, August 23

7:00pm Shabbat Service

Torah Study

Saturday, July 6, 13, 20, & 27

10:30am Torah Study & Kiddush Lunch

- July 6th, led by Cree Krull
- July 20th, led by Chris Zinck

Saturday, August 3, 10, 17, 24, & 31

10:30am Torah Study & Kiddush Lunch

- August 3rd, led by Susan and Chris Marshall
- August 31st . . . This could be you!!

Where is Rabbi Asch? Rabbi Asch will be spending a weekend at Camp Kingswood in Bridgton leading Shabbat services. She will also spend a week at URJ Crane Lake Camp in the Berkshires on faculty, teaching and learning a lot to bring back to TBE. We have five kids going to Jewish overnight camp this summer!

TBE Activities

Monday, July 15

6:30pm Introduction to Judaism

Wednesday, July 17

5:30pm Soup & Study

Monday, August 5

5:30pm Book Club

Wednesday, August 7

5:30pm Soup & Study

Thursday, August 15

5:00pm TBE Board Meeting

Interfaith Activities

Every Tuesday

12:30pm Volunteering at Addie's Attic

Don't Forget Terumah!

It is an exciting time. We hope to be back in our newly renovated synagogue by High Holidays. Please remember the funds for the renovation are separate from our operating funds. July 1 is the beginning of the new fiscal year for TBE. Your *terumah* is how we pay for everything else. Everything from payroll to postage to challah comes from *terumah* funds.

Remember, we no longer have set dues. A donation of any amount makes you a member. Please show your support for the operation of our synagogue through your *terumah* (free will offering).

Moving from Demolition to Restoration

We have completed the demolition phase of the Temple Renovation Project, and what a demolition it was! While we all have been praying, studying, organizing, and celebrating in our 60-year old Temple, little did we know that:

- Most of the wiring in the walls was dangerously out of compliance with electrical codes having started a fire in the wall in one instance and dangerously close to starting another in a different area. We are fortunate to still have a Temple.
- Black mold was found in the walls throughout the rear of the Temple, a result of years of a leaking roof.
- The roof over the bimah had not been constructed in a structurally sound manner. It had a significant “saddle” in it and potentially could have failed.
- Massive hornet nests were found beneath the bimah; the result of aged siding (no surprise to anyone attending last year’s high holiday services).

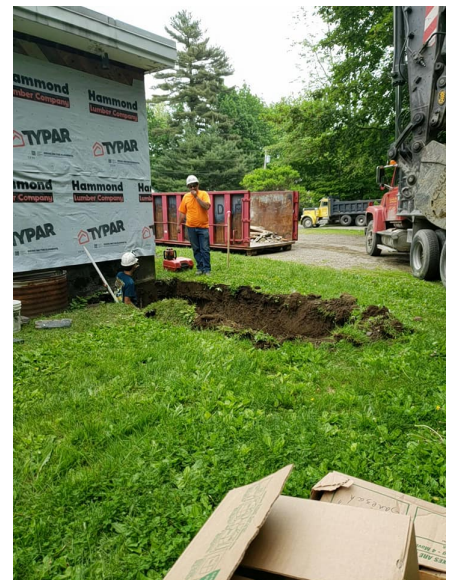


Here are some unsettling photos of a sampling of what we have found. We are in the process of assessing the impact of these discoveries on our building project budget. While we had planned for some contingencies, we had not contemplated expenditures for rewiring the entire building and replacing the roof structure over part of the building. But the reality is, we have no choice but to proceed forward with these improvements. We must have a safe and healthy Temple. Those building project items that can be deferred until next year will be put on hold to lessen the strain on our cash reserves, as we continue our fundraising efforts.



As I write this update, they are pouring concrete for the additional space and the new entrance – a true sign that we have turned the corner from demolition to restoration. New siding is already going up and we expect the windows to arrive shortly. Ducting for new heating and air-conditioning is being installed through walls and ceilings. Also of note is that the ark and cabinetry is in the process of being restored to its original condition by Zoulamis Fine Woodworking in Gardiner. Feel free to stop by and see the work in progress.

Your Temple Under Reconstruction!



Bikkur Holim (Caring) Committee

Under the leadership of Susan Bakaley Marshall, we are starting a Bikkur Holim (Caring) Committee. Here is how you can help:

1. Sign up to help make meals, give rides, or visit people. If you are willing to sign up, please contact Susan: wiserock@fairpoint.net.
2. Let us know if you need help! We can't make you meals or visit you if we don't know you are in need. Contact Susan or the office if we can help you out. It will take us a little while to get up and running, but we want to know how we can help.



Stepping Up to Lead Torah Study

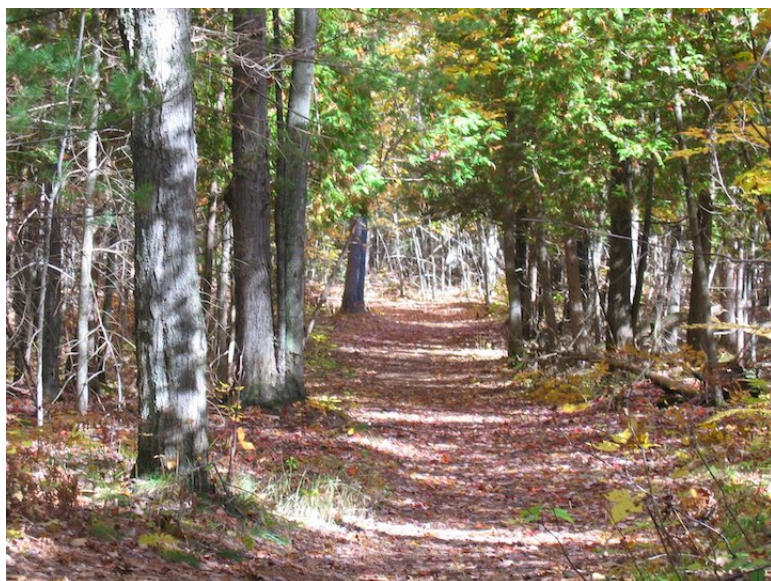
A big *todah raba* to the TBE members who have stepped up to lead Torah study sessions this summer! *If you are interested in leading a future Torah study, please email Rabbi Asch.* She will provide resources and guidance to help you get started!

Intro to Judaism Class

Rabbi Asch is starting a new class for people who are thinking about conversation or those who are Jewish, but don't know very much about Judaism. The class will meet regularly for about nine months. ***If you are interested in this class, please contact Rabbi Asch for an individual meeting.*** She would be happy to tell you more about the class and see if it is the right fit for you! We always welcome people who want to learn more.



Save the Date: Selichot on Saturday, Sept. 21st



Shabbat Walks & Potluck Lunch

Saturday, July 13th

10:30am @ Vaughan Woods

Lunch @ Shed/Davis house
(72 Middle Street, Hallowell)

Saturday, August 17th

10:30am @ Location TBD

Join us for a beautiful Shabbat hike. Please bring a dish to share for a potluck lunch following the walk.

Shabbat on the Lake!

Friday, July 26th @ 6pm

40 Upper Narrows Road, Winthrop

Join us and hosts Tinalyn Caisse and Scott Knox for a peaceful Shabbat service on the lake and potluck supper to follow. Please bring a chair and a dish to share!

****** Save the date for Shabbat on the Lake,
August 9th, location TBA ******



High Holidays are here (well, almost here!) — volunteers needed!

High Holidays are just around the corner and we need your help! We need volunteers to choose readings and decide honors for this year's High Holiday services. Volunteers would be committing to about 4 hours of their time over the course of the summer. If you are interested, please contact Rabbi Asch.

Soup & Study

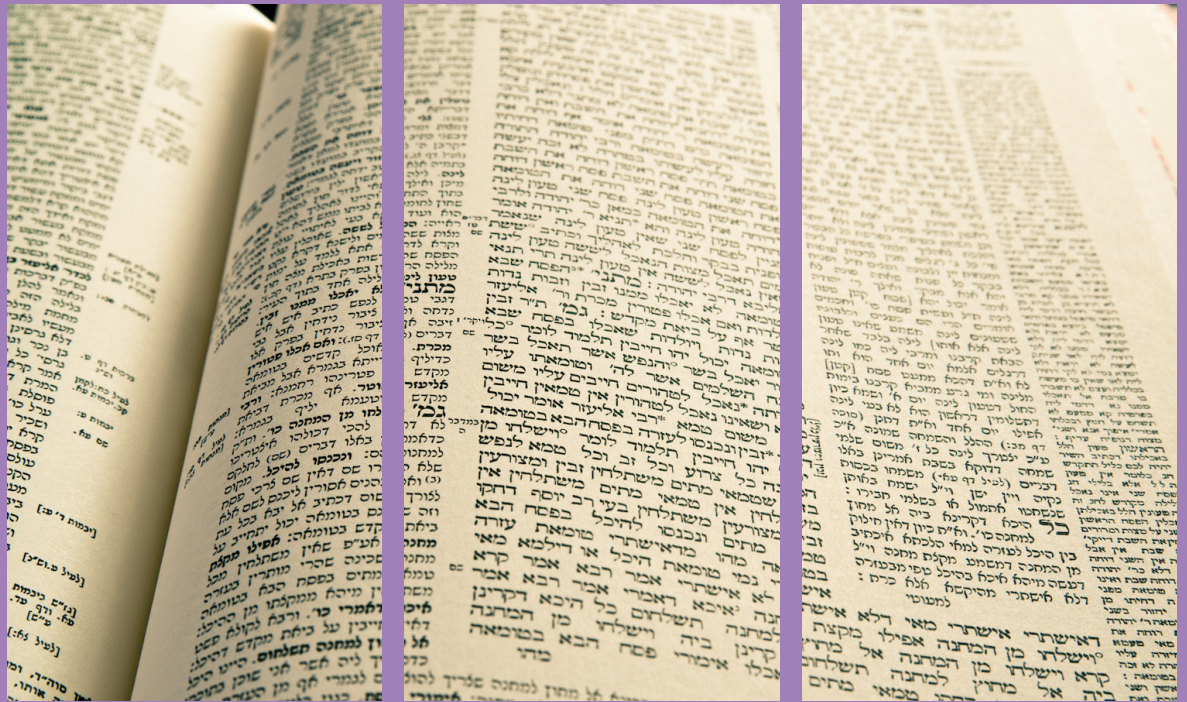
5:30pm, Wednesday, July 17th

Stories from the Talmud

5:30pm, Wednesday, August 7th

Topic TBD

What's happening at TBE



Soup and Study: Tales from the Talmud

JOIN FOR A DELICIOUS DINNER AND
STUDY AND DISCUSSION OF JEWISH
TEXTS

WEDNESDAY JULY 17TH FROM 5:30-7:00PM

TEMPLE BETH EL (HEBREW SCHOOL BUILDING)
PLEASE RSVP TO THE OFFICE SO WE HAVE
ENOUGH FOOD!

Come to the "New Look" Tisha B'Av

Sunday, August 11th

UU Community Church: 69 Winthrop St.
Service and Stories 7:00-8:15
Communal Meal 8:15-9:00

Join us for a new look at Tisha B'Av. We'll gather together with the Muslim and Unitarian Universalist communities to explore loss, exile, and memory. Rabbi Asch will read from the book of Lamentations and share some teachings about Jewish exile. We will hear stories of how members of our community had to flee their countries of origin. We will also explore how we ourselves have been complicit in the exile and displacement.

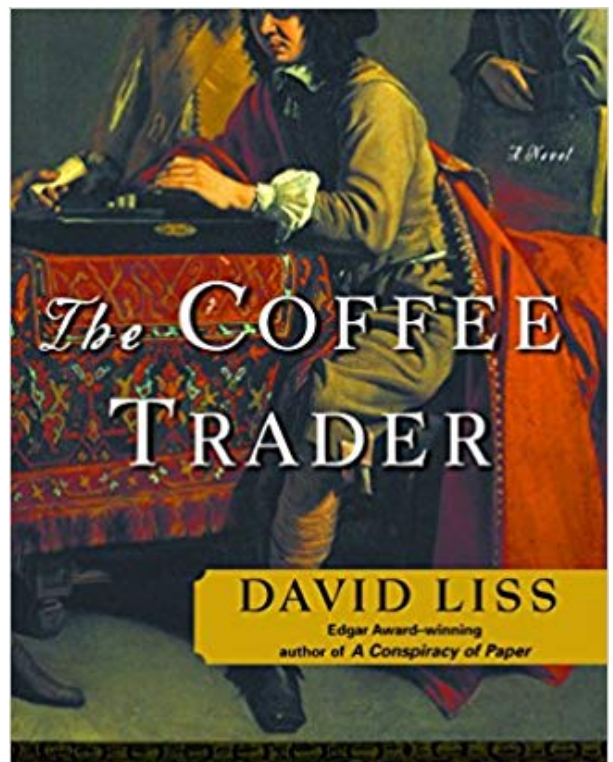
Has it been awhile since your last Tisha B'Av fast? You're probably not as alone as you might think. Let's observe Tisha B'Av together this year and make the evening break-fast meal one to remember with our neighbors, in the spirit of community and interfaith fellowship. The Muslim community will provide the food. Please bring a donation for our cooks to cover the cost of food and preparation. We suggest that you contribute the amount you would have spent on food during the fast day-- \$10 per person.



TBE Book Club

Monday, August 5
5:30pm @ TBE

We are reading "The Coffee Trader" by David Liss. This is novel set in Amsterdam, 1659: On the world's first commodities exchange, fortunes are won and lost in an instant. Miguel Lienzo, a sharp-witted trader in the city's close-knit community of Portuguese Jews, knows this only too well. Once among the city's most envied merchants, Miguel has suddenly lost everything. Now, impoverished and humiliated, living in his younger brother's canal-flooded basement, Miguel must find a way to restore his wealth and reputation. Come join us in discussion.



What's happening at TBE

Todah Rabah

- Thank you so much to everyone who pitched in to help pack and move everything from the synagogue, as well as those who came out to the Annual Meeting and Hebrew School End-of-Year Carnival.
- Thanks again to **Sarah and Mike Drickey** for their tremendous contribution to the Temple Beth El community. Mazel tov on receiving the Temple Service Award this year!
- Special thanks to **Jerry Bley** for overseeing construction. He is at the synagogue *every day*!



Summer Funtensive: Jewish Heroes

July 8-12, 2019

This program—the only one of its kind north of Portland—provides a summer experience to children who cannot afford or easily travel to traditional Jewish camps. Based at TBE, the Mid-Maine Jewish Funtensive attracts students from Waterville, Augusta, Bath, Lewiston-Auburn, Portland, and beyond. Jewish teens and college students work with local rabbis to provide fun and educational Jewish experiences including games, songs, stories, and art projects. Participants leave the program with a sizable modern Hebrew vocabulary and other skills that can only be conveyed in an intensive, immersive Jewish experience. It is also an opportunity to meet Jewish kids from throughout the state.

We will not be providing transportation service this year, but will happily work with you and your community to coordinate and support a van to bring kids to Augusta. The Bangor community will be organizing a van. For more information about the program, contact Rabbi Asch at rabbiasch@gmail.com.



First Day of Hebrew School: Sept. 8!

Donations

Building Fund Capital Campaign 2019

- Ellen Freed and Carol Barlow
- Karen and Peter Bickerman
- Nancy Fox and Jon Edwards
- Jeff Frankel
- Carol Graham
- Tinker and Reg Hannaford
- Rabbi Isaacs and Melanie Weiss
- Ronald Kreisman
- Jerryanne LaPerriere
- Margery and Al Margolis
- Susan and David Offer
- Ellen and Edward Ringel
- Matthew Rolnick
- Phyllis Santer and Carl Suchar
- Jean and Bill Seager
- Nancy and Charles Shuman
- Nancy Weingarten and Steve Diamond



Rabbi Discretionary Fund

- Joan and Lowell Freiman
- Anya and Allen Goldey

Yahrzeit/Memorials

- Richard Dana in memory of Elizabeth Dana
- Sarah and Mike Drickey in memory of Jack Drickey
- Janila Eckert in memory of Edwin Eckert
- Jeff Frankel in memory of Joan (Jet) Price
- Ellen Freed and Carol Barlow in memory of Joan (Jet) Price
- Ellen Freed and Carol Barlow in memory of Scott Rosemark
- Joan and Lowell Freiman in memory of Albert Freiman
- Anya and Allen Goldey in memory of Sidney Goldstein
- Seth Greene in memory of Joan (Jet) Price
- Seth Greene in memory of Harold Shapiro
- Ava and Bob Gross in memory of Joan (Jet) Price
- Michael Levey in memory of Joan (Jet) Price
- Yale Marienhoff in memory of Meyer Schwartz
- Kate McLinn in memory of Matthew Peter McLinn
- Nancy Ross and George Viles in memory of Joan (Jet) Price
- Maris Sacks in memory of Dr. Julian Sacks
- Nan Salvino and Jon Mittelman in memory of Irwin Mittelman
- Nan Salvino and Jon Mittelman in memory of Marilyn Molner
- Deb and Syd Sewall in memory of Joan (Jet) Price
- Doretta Shapiro in memory of Joan (Jet) Price
- Nancy and Charles Shuman in memory of Samuel Lerman
- Dace and Jon Weiss in memory of Irving Weiss
- Dace and Jon Weiss in memory of Clara Miller
- Marty Weiss in memory of Joan (Jet) Price
- Marty Weiss in memory of Samuel Weiss

Making a donation to Temple Beth El is a special way to honor family and friends.

Terumah

This fund includes the former General Fund and Dues and covers all temple operating expenses.

Building Fund

This fund is for major repair and rebuilding of our facilities.

Rabbi's Discretionary Fund

This fund helps Rabbi Asch meet special needs in the community.

Yahrzeit/Memorials/Honoraria

These contributions are made in memory or honor of family and friends.

Memorial Plaques

Remember a loved one with a memorial plaque in the synagogue. Donation: \$250

Payment due at time of order.

Tree of Life

Acknowledge a life milestone in a special way by adding a personalized, inscribed leaf to the Tree. Donation: \$36.

Payment due at time of order.

Please make checks payable to Temple Beth El. Indicate the fund to which you want to contribute and mail to TBE, Box 871, Augusta, ME 04332. Undesignated checks will go to the General Fund. *Temple Beth El accepts Visa & Mastercard. Please contact the office with any questions.*

Temple Beth El

Phone 207-622-7450
 Rabbi Erica Asch 207-242-9792
 Email: bethelaugusta@gmail.com

President

Chuck Cohen

Vice President

Mike Drickey

Treasurer

Hildie Lipson

Secretary

Judith Plano

Board of Directors

Emily Bessey, J. Richardson
 Collins, Mike Drickey, Richard
 Fein, Ellen Freed, Richard
 Goldman, Nancy Kelly, Cree
 Krull, Fran Rudoff, Lila
 Solomon, Chris Zinck

Honorary Directors

Peter Bickerman
 Julius Goos
 Sumner Lipman

Committee Chairs:

Emily Bley (Hebrew School)
 Judith Plano (Yad B'Yad)
 Fran Rudoff (Fundraising)

July Yahrzeits

July 3	Beatrice Director
July 4	Ruth Gross
	Miriam Weiss
	Lillian Lieba Sandler
July 6	Sol Moser
July 8	Gloria Mondschein
July 11	Seymour (Sy) Mondschein
July 12	Goldie Davis Passman
July 14	Linda Wiess Manson
	Benjamin Rubinstein
July 16	Fred Hannaford
July 18	Anthony A. Imondi
July 21	Marcia Allen
	David James Macy
	Edith Gershon
July 24	Rose Aransky LaPenna
July 25	Harry Lait
July 26	Harold M. Grodinsky
July 27	Gertrude Lerman
July 28	Bernigolde Macy
July 29	Naomi Shore

August Yahrzeits

August 1	Thelma Alpert Price
August 4	Blanche Marienhoff
August 5	Kent R. Katz
	Lydia Liechty Thielman
August 7	Sylvia K. Fain
	Rose Schwartz Finkelstein
August 8	William Weisberger
August 9	Nonie Barber
	Rebecca Schneider Coher
August 11	Julia Weiss
	Dorothy Spalding
August 12	Pearl Bien
August 13	Robert Bley
	Esther Kominers
August 14	Hylan Bickerman
	Gerald Brock
August 16	Joel Douglas Wells
	Ed Jones
August 18	Bernard Osgood Koopma
August 20	Harold Franzel
	Lynn Slosberg
August 21	Dora Cohen
August 23	Dick Faucher
August 25	Janice Leavitt
	Rae Weiss
August 27	Stephen Fusco
August 29	Gerald Golden
August 31	Esther Shuman

**Portland Chevra Kadisha
 Jewish Funeral Home**
 471 Deering Ave.
 Portland, ME 04103
 207.774.3733



*Refuah Sh'lemah
 (Get Well) to:*

Carole Fitzgerald
 Julius Goos
 Michael Libby
 Judy Plano